

DEPARTMENT OF THE ARMY TECHNICAL MANUAL

**ORGANIZATIONAL, DIRECT SUPPORT, AND GENERAL
SUPPORT MAINTENANCE REPAIR PARTS AND SPECIAL
TOOLS LISTS (INCLUDING DEPOT MAINTENANCE
REPAIR PARTS AND SPECIAL TOOLS)
INTERCOMMUNICATION STATIONS LS-130/FI,
LS-130A/FI, LS-130B/FI, AND LS-130C/FI
FSN 5830-222-1663**

**Headquarters, Department of the Army, Washington, D.C.
31 July 1973**

Current as of January 1973

	Paragraph	Page
Section I. INTRODUCTION		2
Scope	1-1	2
General	1-2	2
Explanation of columns	1-3	2
Special information	1-4	4
Location of repair parts	1-5	4
Abbreviations (Not applicable)	1-6	4
Reporting of equipment publication improvements	1-7	4
II. PRESCRIBED LOAD ALLOWANCES (Not applicable)		
III. REPAIR PARTS LIST (Not applicable)		
IV. SPECIAL TOOLS TEST AND SUPPORT EQUIPMENT (Not applicable)		
V. REPAIR PARTS LIST		6
VI. SPECIAL TOOLS, TEST AND SUPPORT EQUIPMENT (Not applicable)		
VII. INDEX - FEDERAL STOCK NUMBER AND REFERENCE NUMBER CROSS-REFERENCE TO FIGURE AND ITEM NUMBER		7

SECTION I

INTRODUCTION

1 - 1 . S c o p e

This manual lists repair parts and special tools required for the performance of organizational, direct support, general support, and depot maintenance of the LS-130/FI, LS-130A/FI, LS-130B/FI, and LS-130C/FI. The FCCN for the equipment is GCMACI for all models.

1 - 2 . G e n e r a l

This repair parts and special tools list is divided into the following sections:

a. *Prescribed Load Allowance (PLA)*—Section II. Not applicable.

b. *Repair Parts List*—Section III. Not applicable.

c. *Special Tools, Test and Support Equipment*—Section IV. Not applicable.

d. *Repair Parts List*—Section V. A list of repair parts authorized for the performance of maintenance at the direct support, general support, and depot level.

e. *Special Tools, Test and Support Equipment*—Section VI. Not applicable.

f. *Index—Federal Stock Number and Reference Number Cross-Reference to Figure and Item Number*—Section VII. A list, in ascending numerical sequence, of all Federal stock numbers appearing in the listings, followed by a list, in alphabetic sequence, of all reference numbers appearing in the listings. Federal stock number and reference numbers are cross-referenced to each illustration figure and item number or reference designation appearance.

1-3. Explanation of Columns

The following provides an explanation of columns found in the tabular list.

a. *Source, Maintenance, and Recoverability Codes (SMR).*

(1) *Source code.* Indicates the manner of acquiring support items for maintenance, repair, or overhaul of end items. Source codes are—

<i>Code</i>	<i>Explanation</i>
PA	Item procured and stocked for anticipated or known usage.
PB	Item procured and stocked for insurance purposes because essentiality dictates that a minimum quantity be available in the supply systems.
PC	Item procured and stocked and which otherwise would be coded PA except that it is derivative in nature.

<i>Code</i>	<i>Explanation</i>
PD	Support item, excluding support equipment, procured for initial issue or outfitting and stocked only for subsequent or additional initial issues or outfittings. Not subject to automatic replenishment.
PE	Support equipment procured and stocked for initial issue or outfitting to specified maintenance repair activities.
PF	Support equipment which will not be stocked but which will be centrally procured on demand.
PG	Item procured and stocked to provide for sustained support for the life of the equipment. It is applied to an item peculiar to the equipment which because of probable discontinuance or shutdown of production facilities would prove uneconomical to reproduce at a later time.
KD	An item of depot overhaul/repair kit and not purchased separately. Depot kit defined as a kit that provides items required at the time of overhaul or repair.
KF	An item of a maintenance kit and not purchased separately. Maintenance kit defined as a kit that provides an item that can be replaced at organizational or direct support or general support levels of maintenance.
KB	Item included in both a depot overhaul/repair kit and a maintenance kit.
MO	Item to be manufactured or fabricated at organizational level.
MF	Item to be manufactured or fabricated at direct support maintenance level.
MH	Item to be manufactured or fabricated at general support maintenance level.
MD	Item to be manufactured or fabricated at depot maintenance level.
AO	Item to be assembled at organizational level.
AF	Item to be assembled at direct support maintenance level.
AH	Item to be assembled at general support maintenance level.
AD	Item to be assembled at depot maintenance level.
XA	Item is not procured or stocked because the requirements for the item will result in the replacement of the next higher assembly.
XB	Item is not procured or stocked. If not available through salvage, requisition.
XC	Installation drawing, diagram instruction.

Code	Explanation
	sheet, field service drawing, that is identified by manufacturers' part number.
XD	Support items can be requisitioned with justification.

NOTE

Cannibalization or salvage may be used as a source of supply for any items source coded above except those coded XA and aircraft support items as restricted by AR 700-42.

(2) *Maintenance code.* Maintenance codes are assigned to indicate the levels of maintenance authorized to USE and REPAIR support items. The maintenance codes are entered in the third and fourth positions of the Uniform SMR Code Format as follows—

(a) *Use (third position).* The maintenance code entered in the third position indicates the lowest maintenance level authorized to remove, replace, and use the support item. The maintenance code entered in the third position indicates one of the following levels of maintenance.

Code	Application/Explanation
O	Support item is removed, replaced, used at the organizational level of maintenance.

NOTE

A code "C" may be used in this position to denote crew or operator maintenance performed within organizational maintenance.

F	Support item is removed, replaced, used at the direct support maintenance level.
H	Support item is removed, replaced, used at the general support maintenance.
D	Support items that are removed, replaced, used at depot only.

(b) *Repair (fourth position).* The maintenance code entered in the fourth position indicates whether the item is to be repaired and identifies the lowest maintenance level with the capability to perform complete repair (i.e., all authorized maintenance functions). When a maintenance code is not used a dash (-) sign is entered. For multi-service equipment/systems or when a code is entered, this position will contain one of the following maintenance codes as assigned by the service(s) that require the code—

Code	Application/Explanation
O	The lowest maintenance level capable of complete repair of the support item is the organizational level.
F	The lowest maintenance level capable of complete repair of the support item is direct support.

Code	Application/Explanation
H	The lowest maintenance level capable of complete repair of the support item is general support.
D	The lowest maintenance level capable of complete repair of the support item is the depot level.
L	Repair restricted to designated Specialized Repair Activity.
Z	Non-repairable. No repair is authorized.
B	No repair is authorized. The item may be reconditioned by adjusting, lubricating, etc., at the user level. No parts or special tools are procured for the maintenance of this item.

(3) *Recoverability code.* Recoverability codes are assigned to support items to indicate the disposition action on unserviceable items. The recoverability code is entered in the fifth position of the uniform SMR Code Format as follows—

Code	Explanation
Z	Nonrepairable item. When unserviceable, condemn and dispose at the level indicated in the first digit of the maintenance code.
O	Repairable item. When uneconomically repairable, condemn and dispose at organizational level.
F	Repairable item. When uneconomically repairable, condemn and dispose at the direct support level.
H	Repairable item. When uneconomically repairable, condemn and dispose at the general support level.
D	Repairable item. When beyond lower level repair capability, return to depot. Condemnation and disposal not authorized below depot level.
L	Repairable item. Repair, condemnation, and disposal not authorized below depot/Specialized Repair Activity level.
A	Item requires special handling or condemnation procedures because of specific reasons (i.e., precious metal content, high dollar value, critical material or hazardous material).

b. *Federal Stock Number.* Indicates the Federal stock number assigned to the item and will be used for requisitioning purposes

c. *Description.* Indicates the Federal item name and a minimum description required to identify the item. The last line indicates the reference number followed by the applicable Federal Supply Code for Manufacturer (FSCM) in parentheses. The FSCM is used as an element in item identification to design-

nate manufacturer or distributor or Government agency, etc., and is identified in SB 708-42.

d. Unit of Measure (U/M). Indicates the standard or basic quantity by which the listed item is used in performing the actual maintenance function. This measure is expressed by a two-character alphabetical abbreviation; e.g., ea, in, pr, etc., and is the basis used to indicate quantities and allowances in subsequent columns. When the unit of measure differs from the unit of issue, the lowest unit of issue that will satisfy the required units of measure will be requisitioned.

e. Quantity Incorporated in Unit. This column indicates the quantity of the item used in the equipment.

f. 15-Day Organizational Maintenance Allowance Not applicable.

g. 30-Day DS/GS Maintenance Allowances.

NOTE

Allowances in GS column are for GS maintenance only.

(1) The repair parts indicated by asterisk entries in separate allowance columns for DS and GS represent those authorized for use at that category of maintenance to be requisitioned on an "as required" basis, until stockage is based on demand in accordance with AR 710-2.

(2) Allowance quantities are indicated in the special tool lists section for special tools, TMDE, and other support equipment.

h. 1-Year Allowances Per 100 Equipments/Contingency Planning Purposes. Column intentionally left blank.

i. Depot Maintenance Allowance Per 100 Equipments. This column indicates opposite the first appearance of each item the total quantity authorized for depot maintenance of 100 equipments.

j. Illustration. Not applicable.

1-4. Special Information

a. Usable on codes are included in column 3. U coded items are applicable to all models. Identification of the usable on codes used in this publication are—

Code	Used on
AOJ	LS-130/11
AOK	LS-130A/FI
AOL	LS-130B/FI
AOM	LS-130C/FI

b. The following publication pertains to the equipment and its components:

TM 11-5089 Intercommunication Stations LS-200/FI, LS-201/FI, LS-202/FI, LS-124D/FI, LS-126B/FI, and LS-138/FI and Intercommunicating Stations LS-125/FI, LS-125A/FI, LS-125B/FI, and LS-127B/FI.

1-5. Location of Repair Parts

a. This manual contains one cross-reference index (sec VII) to be used to locate a repair part when either the Federal stock number or reference number (manufacturer's part number) is known. The first column in the index is prepared in numerical or alphanumeric sequence in ascending order. The reference numbers (manufacturer's part numbers) are listed immediately following the last listed Federal stock number in the index of Federal stock numbers.

b. When the Federal stock number or reference number is known, follow the procedures given in (1) and (2) below.

(1) Refer to the index of Federal stock numbers (sec VII), and locate the Federal stock number or reference number. The FSN and reference number are cross-referenced to the applicable figure and item number or reference designation.

(2) Refer to the repair parts list (sec III and V) and locate the figure number (col 7a—20P, 10a—34P) and item number or reference designation (col 7b—20P, 10b—34P) as noted in the FSN index.

c. When the figure and item number or reference designation are known, scrutinize columns 7a and 7b—20P and 10a and 10b—34P, of the repair parts list (sec III and V) until the item is located.

d. When the FSN, reference number, figure number, and item number are not known, scrutinize column 3 of the repair parts list (sec III and V), which is arranged in alphabetical order.

1-6. Abbreviations

Not applicable.

1-7. Reporting of Equipment Publication Improvements

The reporting of errors, omissions, and recommendations for improving this publication by the individual user is encouraged. Reports should be submitted on DA Form 2028 (Recommended Changes to Publications) and forwarded direct to Commander, US Army Electronics Command, ATTN: AMSEL-MA-CW, Fort Monmouth, N.J. 07708

Next printed page is 6)

ZMR CODE	FEDERAL STOCK NUMBER	DESCRIPTION REFERENCE NUMBER & MFR. CODE USABLE ON CODE	UNIT OF MEAS	QTY INC IN UNIT	30-DAY DS MAINT ALLOWANCE			30-DAY GS MAINT ALLOWANCE			1-YR ALW PER 100 EQUIP CHNGY	DEPOT MAINT ALW PER 100 EQUIP	ILLUSTRATION	
					(a)	(b)	(c)	(a)	(b)	(c)			(a)	(b)
					1-20	21-50	51-100	1-20	21-50	1-100			FIGURE NO.	ITEM NO.
	58330-497-9679	BRACKET NO-REF-DESIG TERM BOARD..... SUPPORT 409 (78584)	EA	2	*	*	*	*	*	*		2		
	5340-660-0898	BUMPER, RUBBER NO-REF-DESIG FEET FOR... BOTTOM OF CASE SC898732 (80063)	EA	4	*	*	*	*	*	*		10		
	5930-230-2582	SWITCH, SENSITIVE NO-REF-DESIG JAN-5-63 TYPE SS03A10 (81350) ADJ, AUL	EA	1	*	*	*	*	*	*		5		
	5930-224-5678	SWITCH, TOGGLE NO-REF-DESIG..... 21858FA (10099) ASK	EA	1	*	*	*	*	*	*		5		
	5930-296-5837	SWITCH, PUSH NO-REF-DESIG..... SC898137 (80063) ADJ	EA	1	*	*	*	*	*	*		5		

INDEX - FEDERAL STOCK NUMBER AND REFERENCE NUMBER
CROSS-REFERENCE TO FIGURE AND ITEM NUMBER

STOCK NUMBER

5340-643-0898
5830-497-9479
5930-224-5678

FIGURE NO.

ITEM NO.

STOCK NUMBER

5930-230-2582
5930-296-5837

FIGURE NO.

ITEM NO.

REFERENCE NO.

SC898132
SC898137
SS03A10

MFR CODE FIG. NO. ITEM NO.

80063
80063
81350

REFERENCE NO.

21858FA
609

MFR CODE FIG. NO. ITEM NO.

04009
78584

By Order of the Secretary of the Army:

CREIGHTON W. ABRAMS
General, United States Army
Chief of Staff

Official:

VERNE L. BOWERS
Major General, United States Army
The Adjutant General

Distribution:

Active Army:

USASA (2)
CNGB (1)
ACSC-E (2)
USAARENBD (2)
USAMB (10)
AMC (1)
CONARC (5)
ARADCOM (2)
ARADCOM Rgt (2)
OS Maj Comd (4)
LOGCOMDS (5)
MICOM (2)
TECOM (2)
USASTRATCOM (4)
HISA (ECOM) (18)
MDW (1)
Armies (2)
Corps (2)
Svc Colleges (2)
USASESS (5)
USAADS (2)
USAFAS (2)
USAARMS (2)
USAIS (2)
USAES (2)
USAINTS (3)
USACDCEC (5)

Instl (2) except
Fort Gordon (10)
Fort Huachuca (10)
Fort Carson (10)
WSMR (2)
Army Dep (2) except
LBAD (14)
SAAD (30)
TOAD (14)
LEAD (7)
ATAD (10)
USA Dep (2)
Sig Sec USA Dep (2)
Sip: Dep (5)
Sig FLDMS (1)
USAERDAA (1)
USAERDAW (1)
MAAG (1)
USARMIS (1)
Ft Richardson (ECOM Ofc) (2)
WRAMC (1)
Units org under fool TOE:
(1 copy each)
11-158
29-134
29-136

NG: None

USAR: None

For explanation of abbreviations used, see AR 310-50

END

7-25-83

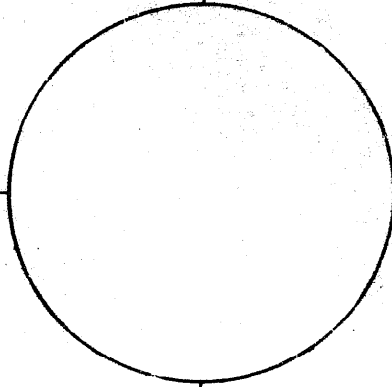
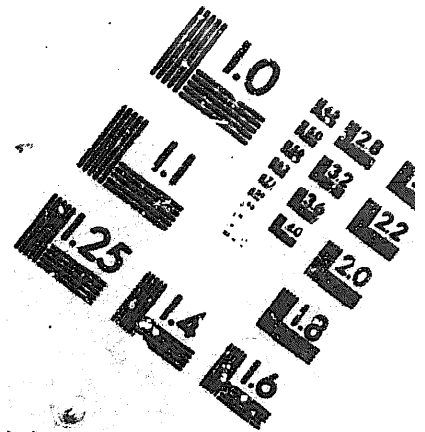
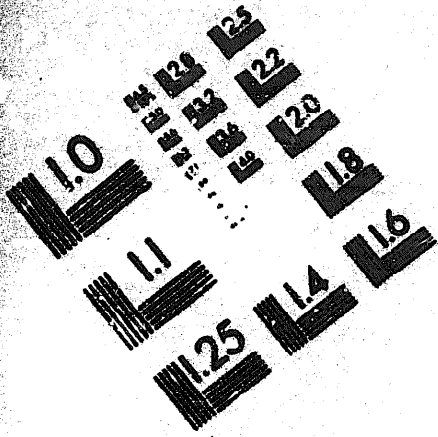
DATE





DEPARTMENT OF THE ARMY

MICROFORM TEST TARGET



1.0 mm (ø = .01 mm)

ABCDEFGHIJKLMN OPQRSTUVWXYZ 1234567890
abcdefghijklmnopqrstuvwxyz %& / ' * 1/2 1/4 1/8 — + = & @ *

1.5 mm (ø = 1.09 mm)

ABCDEFGHIJKLMN OPQRSTUVWXYZ 1234567890
abcdefghijklmnopqrstuvwxyz %& / ' * 1/2 1/4 1/8 — + = & @ *



1.0 mm (ø = .01 mm)

ABCDEFGHIJKLMN OPQRSTUVWXYZ 1234567890
abcdefghijklmnopqrstuvwxyz %& / ' * 1/2 1/4 1/8 — + = & @ *

1.5 mm (ø = 1.09 mm)

ABCDEFGHIJKLMN OPQRSTUVWXYZ 1234567890
abcdefghijklmnopqrstuvwxyz %& / ' * 1/2 1/4 1/8 — + = & @ *